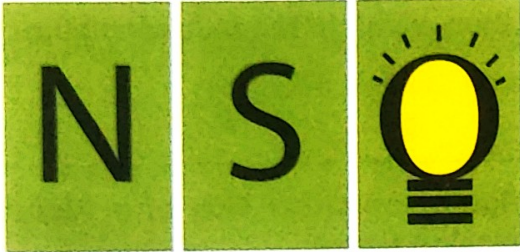
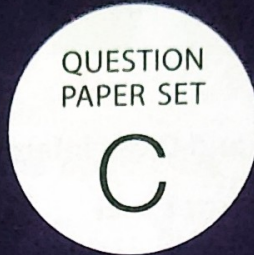




Techfest™
Asia's Largest Science & Technology Festival



SOF NATIONAL SCIENCE
OLYMPIAD 2025-26



Total Questions : 35

Time : 1 hr.

Guidelines for the Candidate

- You will get additional ten minutes to fill up information about yourself on the OMR Sheet, before the start of the exam.
- Write your **Name, School Code, Class, Section, Roll No.** and **Mobile Number** clearly on the **OMR Sheet** and do not forget to sign it. We will share your marks / result and other information related to SOF exams on your mobile number.
- The Question Paper comprises three sections:
Logical Reasoning (5 Questions), **Science** (25 Questions) and **Achievers Section** (5 Questions)
Each question in Achievers Section carries 2 marks, whereas all other questions carry 1 mark each.
- All questions are compulsory. There is no negative marking. Use of calculator is not permitted.
- There is only ONE correct answer. Choose only ONE option for an answer.
- To mark your choice of answers by darkening the circles on the OMR Sheet, use **HB Pencil** or **Blue / Black ball point pen** only.
E.g.
Q. 16: Hard outer covering of the tree trunk is called
A. Bark B. Spine C. Branch D. Bud.
As the correct answer is option A, you must darken the circle corresponding to option A on the OMR Sheet.
- Rough work should be done in the blank space provided in the booklet.
- Return the OMR Sheet to the invigilator at the end of the exam.
- Please fill in your personal details in the space provided before attempting the paper.
- SOF - Techfest IIT Bombay Innovation Challenge - Open for class 8, 9 and 10. For more details, please visit : www.sofworld.org**



Name:.....

SOF Olympiad Roll No.:..... Contact No.:.....

DO NOT OPEN THIS BOOKLET UNTIL ASKED TO DO SO

THE WORLD'S BIGGEST OLYMPIADS	27 Years of Trust	99,499+ Schools	72 Countries	8.1+ Crores Assessments	8 Olympiads
--	-----------------------------	---------------------------	------------------------	-----------------------------------	-----------------------

LOGICAL REASONING

1 Study the given arrangement carefully.



If the positions of objects O and Q get interchanged, then which of the following objects will be fifth from the left end?

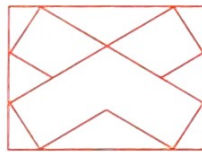
- A. Q B. O C. R D. P

2 There is a certain relationship between the pair of figures on either side of ::. Identify the relationship between the left pair and find the missing figure.



- A.  B.  C.  D. 

3 How many minimum number of straight lines are required to draw the given figure?



- A. 17 B. 14 C. 16 D. 15

4 Which of the following clocks show 20 minutes past the time shown in the given clock?



- A.  B.  C.  D. 

5 Find the missing alphabet in the given alphabet pattern.



- A. J B. K C. L D. N

SPACE FOR ROUGH WORK

SCIENCE

6 Which of the following is NOT made from the products obtained from plants?



7 Read the given statement and select the option that correctly fills the blanks.
_____ 1 _____ is a pet animal, whereas _____ 2 _____ is a farm animal.

- | 1 | 2 |
|----------|-------|
| A. Duck | Cat |
| B. Dog | Hen |
| C. Horse | Tiger |
| D. Deer | Bear |

8 Select the INCORRECT match.

- | | |
|--------------------|-------------------------|
| A. Cow – Herbivore | B. Elephant – Carnivore |
| C. Bear – Omnivore | D. Hyena – Scavenger |

9 Select the option which on unscrambling gives the name of an animal that squeaks.

- A. YEODKN B. GRFO C. SEMUO D. ESHRO

10 Which of the following organs helps to remove waste from the body?



11 Which of the following professionals uses the tools shown in the given picture?

- A. Carpenter B. Painter
C. Cobbler D. Plumber



12 Read the following statements given by four children.

Aryan: This rose smells amazing.
Meera: I can hear the bees buzzing near the flowers.
Ravi: The teddy bear feels so soft.
Sneha: Look at the clouds, they look like cotton.

Which of the following senses is NOT being used by the children in the above statements?

- A. Sense of smell B. Sense of hearing C. Sense of taste D. Sense of touch

SPACE FOR ROUGH WORK

13 Select the odd one out on the basis of type of house.



14 Match column I with column II and select the correct option.

Column I

- (a) Independence Day
- (b) Republic Day
- (c) Gandhi Jayanti
- (d) Children's Day

- A. (a)-2, (b)-1, (c)-4, (d)-3
- C. (a)-4, (b)-1, (c)-2, (d)-3

Column II

- 1. 26th January
- 2. 2nd October
- 3. 14th November
- 4. 15th August

- B. (a)-1, (b)-2, (c)-3, (d)-4
- D. (a)-3, (b)-4, (c)-1, (d)-2

15 Select the INCORRECT statement.

- A. First-aid is given to an injured person before the doctor arrives.
- B. In case of burns, tie a bandage tightly around the affected area.
- C. If a person faints, allow him/her to breathe in fresh air.
- D. A first-aid box contains bandages, antiseptic lotion and medicines.

16 Which of the following activities you must do before going to bed?



17 The given picture shows that

- A. Air moves things
- C. Air does not occupy space

- B. Air has weight
- D. Air is needed for burning.



18 Ansh is standing in his garden in the morning, facing the rising Sun. In which direction will his shadow fall?

- A. North
- C. West

- B. South
- D. East



19 When you are playing in a park with your father's father, how would you introduce him to your friend?

- A. As great grandfather
- C. As maternal grandfather

- B. As paternal grandfather
- D. As uncle

SPACE FOR ROUGH WORK

20 Anaya encircled odd members in the following animal groups based on their eating habits, but made one mistake. Find the group with the mistake.

- A. Zebra, Elephant, Giraffe, Kingfisher
B. Bear, Owl, Crow, Sparrow
C. Lion, Leopard, Snake, Rabbit
D. Cheetah, Jaguar, Seal, Deer

21 Strike out every alternate letter starting from the first one in the given options to get the name of the organ that sends signals to different body parts and controls their functions.

- A. CHAEBAORSTB
B. QBLRPASIMNT
C. PKOISDCNPEQYG
D. BLOUWNDGP

22 Study the given relationship and select the option that can be placed in the given blank.

Tea : Leaves :: Coffee : _____

- A. Roots
B. Flowers
C. Seeds
D. Stem

23 Read the given conversation among four children.

Amit: I ate rice and potato curry for lunch.

Riya: I had chapati, dal with ghee and some salad for lunch.

Rohan: I ate noodles and cold drinks for lunch.

Meena: I had fried chicken and French fries for lunch.

Who among the following had a balanced diet for lunch?

- A. Amit
B. Rohan
C. Riya
D. Meena

24 Select the correct sequence of letters to complete the word given in the box in the following statement.

The **L _ _ I _ G** room is where we sit and welcome our guests.

- A. V, I, N
B. I, V, N
C. N, I, V
D. I, N, V

25 We live together, happy and bright,
With cousins, grandparents—a joyful sight!
So many members, big and strong,
Which type of family do we belong?

- A. Nuclear family
B. Small family
C. Joint family
D. Single parent family

SPACE FOR ROUGH WORK

26 Which of the following are healthy eating habits?

1. Skipping breakfast to save time.
2. Always eating fresh food.
3. Eating meals at a fixed time every day.
4. Talking and laughing while eating.

- A. 2 and 3 only
C. 1, 2 and 4 only

- B. 1 and 4 only
D. 3 and 4 only

27 Riya is going on a trip to a hill station in India, with her parents during her winter break. Which of the following clothing items she must pack?



28 Which of the following statements is correct?

- A. While playing hide-and-seek in a park, prefer dark and isolated places as they are the best spots for hiding.
- B. Do not take your head or hand out of the window of a moving vehicle.
- C. Do not burn fire crackers under adult supervision.
- D. While swimming, push others into the swimming pool to have more fun.

29 Which of the following is the hardest mineral?

- A. Diamond
C. Emerald
B. Ruby
D. Garnet

30 I am a loyal companion to humans and I am often kept as a pet.

Who am I?



SPACE FOR ROUGH WORK

ACHIEVERS SECTION

31 Refer to the given word chop table. Make combinations of boxes to answer the following questions and select the correct option.

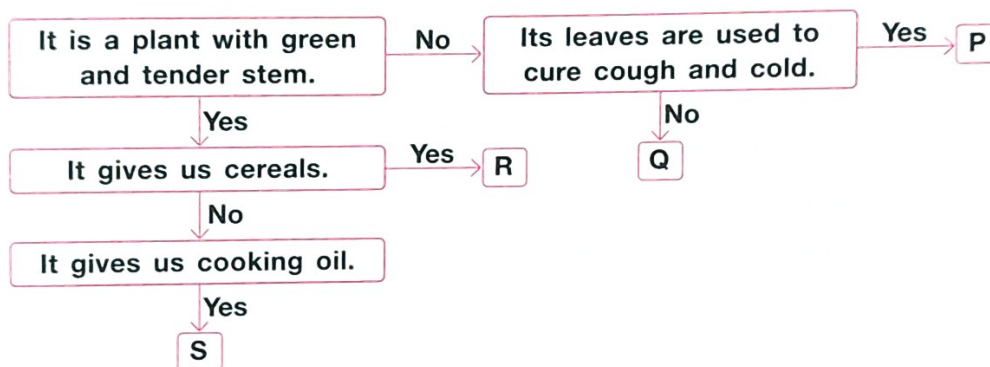
(a) A carnivorous animal that lives both on land and in water.

(b) A farm animal whose baby is called a lamb.

- | | |
|-------------|------------|
| (a) | (b) |
| A. 2, 7, 11 | 5, 10 |
| B. 1, 3 | 4, 12 |
| C. 6, 9 | 14, 15, 16 |
| D. 5, 10 | 8, 13 |

1	2	3	4
SN	MO	AKE	DU
5	6	7	8
FR	WO	NK	SH
9	10	11	12
LF	OG	EY	CK
13	14	15	16
EEL	ELE	PH	ANT

32 Refer to the given flow chart and select the option which correctly identifies P, Q, R and S.



- | P | Q | R | S |
|-----------------|-----------------|--------|---------|
| A. Neem | Jute | Flax | Mint |
| B. Rose | <i>Cinchona</i> | Wheat | Coconut |
| C. <i>Tulsi</i> | Cotton | Rice | Mustard |
| D. Neem | <i>Hibiscus</i> | Cotton | Coconut |

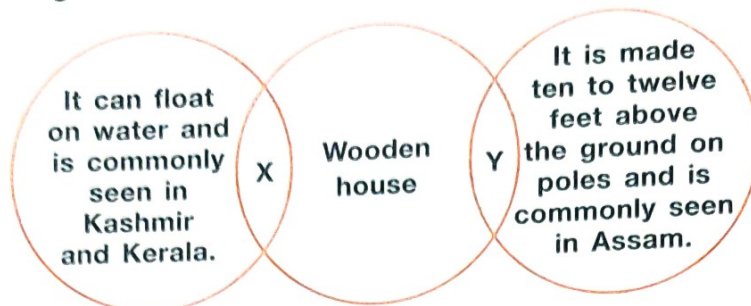
33 Refer to the given word grid and select the option that **CANNOT** be found in it.

- A. A safety gear that protects our head while cycling
 B. A liquid used to clean a wound before covering it
 C. A safe place for pedestrians to walk beside the road
 D. A type of clothing that should be avoided while burning fire crackers

T	R	D	S	P	A
Q	P	B	Y	J	N
H	E	L	M	E	T
B	T	P	H	Q	I
F	U	V	L	P	S
O	S	L	V	N	E
O	E	T	U	Y	P
T	N	P	C	A	T
P	R	T	Q	W	I
A	C	V	B	N	C
T	I	L	O	W	Q
H	J	U	D	Q	X

SPACE FOR ROUGH WORK

- 34 Refer to the given diagram and select the option that correctly identifies X and Y.



- | X | Y |
|--------------|-------------|
| A. Houseboat | Stilt house |
| B. Hut | Bungalow |
| C. Igloo | Caravan |
| D. Flat | Hut |

- 35 Study the given table and select the option that correctly identifies food items X and Y.

Characteristic	Food item	
	X	Y
Energy-giving food	✓	✓
Obtained from stem of a plant	✓	x
Obtained from seed of a plant	x	✓

- | X | Y |
|-----------|-------------|
| A. Oil | Kidney bean |
| B. Paneer | Sugar |
| C. Bread | Gram |
| D. Potato | Rice |

SPACE FOR ROUGH WORK



For latest updates & information, please like our Facebook page (www.facebook.com/sofworld) or register on www.sofworld.org/subscribe-updates.html

For Level 1 and Level 2 preparation material / free sample papers, please log on to www.mtg.in



Head Office: Plot 99, Sector 44 Institutional area, Gurugram -122 003 (HR), India
Email: info@sofworld.org | **Website:** www.sofworld.org